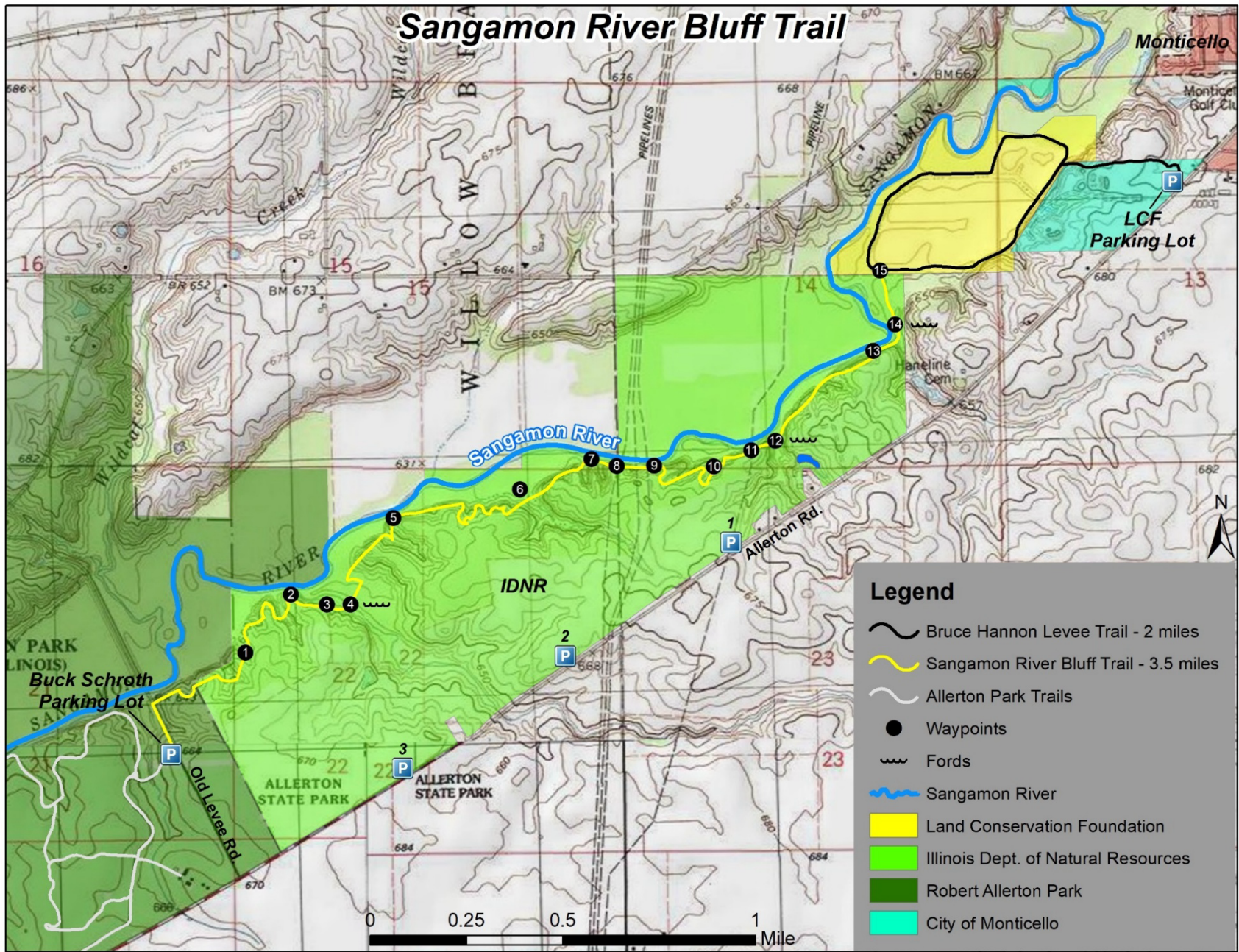


# Sangamon River Bluff Trail



## Legend

- Bruce Hannon Levee Trail - 2 miles
- Sangamon River Bluff Trail - 3.5 miles
- Allerton Park Trails
- Waypoints
- Fords
- Sangamon River
- Land Conservation Foundation
- Illinois Dept. of Natural Resources
- Robert Allerton Park
- City of Monticello

## *Sangamon River Bluff Trail*

The *Sangamon River Bluff Trail* is **5.5-miles-long** and takes about **4-5 hrs.** to hike the entire trail one way.

Check sunset time - allocate enough time for your hike. It ends at the *Buck Schroth Trail* parking lot in Allerton Park., **Yellow blaze** on trees goes to Allerton, **White blaze** goes to the *Bruce Hannon Levee Trail* (LCF).

Access - Is off the *Bruce Hannon Levee Trail* near Stop 10. Look for wayfinding sign and yellow blaze on trees.

Pro Tip - Hike with a friend and leave one car at the LCF parking Lot and one at the Buck Schroth Parking lot.

### Safety -

- Ticks, chiggers, mosquitoes, stinging nettle, and poison ivy occur here, plan accordingly.
- *This is a primitive trail.* It includes crossing 3 small creek fords and the floodplain in several places, if flooded- **“turn around don’t drown”**- To check water levels Google -Sangamon River at Monticello.



- Always tell someone of your hiking plans and share a map of your route. In case of an accident call. Hiking with a partner is recommended.
- In case of emergency call **911.**

**Equipment** - A map, compass, water, snacks, fully charged cell phone, GPS, flashlight, extra batteries, raincoat and seasonal clothing are recommended.

**Trail closed for safety.**

This trail is closed during **shotgun** deer hunting season and is also closed until 1:00 pm during **shotgun** turkey hunting season. Check IDNR website for dates and times.



**Partnership -**

The *Sangamon River Bluff Trail* is a cooperative project between the Illinois Department of Natural Resources, Illinois Nature Preserve Commission, University of Illinois, Allerton Park, the Land Conservation Foundation and the City of Monticello.

The **5.5-mile** trail connects the **14** miles of trails at Allerton Park with **2.0** miles of trail at *the Bruce Hannon Levee Trail* owned by the Land Conservation Foundation. This provides over **20** miles of hiking trails.

**Notable Natural Features -**

The **Sangamon River** is listed on the *Illinois Natural Areas Inventory* for its high diversity of freshwater mussels and the occurrence of the threatened mudpuppy, Illinois' largest salamander and host for the endangered salamander mussel.

The forested corridor is incredibly biodiverse, providing habitat for many species of wood warblers in migration, breeding habitat for area sensitive woodland birds, and year around habitat for birds such as the pileated woodpecker, the largest woodpecker in North America.

The secretive otter, bobcat, and turkey use the area too, but you are more likely to see their tracks, scats or other indicators than the animals themselves.

The spring wildflowers are spectacular. Look for bloodroot, snow trillium, bluebells, wild geranium, prairie trillium, and many more. A large American sycamore just off the trail is 6.2 feet in diameter.

The trail crosses 4 miles of the *Upper Sangamon River Land and Water Reserve*, owned by the Illinois Department of Natural Resources, via a program administered by the Illinois Nature Preserves Commission.

Signage, wayfinding, stewardship and promotion was made possible by the **Wesley Seitz Trail Fund**. **Donations to that fund can be made by visiting LCF web page at <https://www.landconservationfoundation.org>.**



**A special thanks to the incredibly talented Dave Holman for creating the included maps!**