

# Sangamon River Corridor Reserve

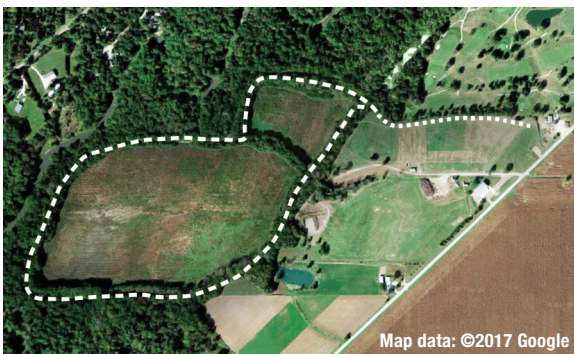
## Bruce Hannon Levee Trail

Piatt County, Illinois  
OPEN SUNRISE TO SUNSET YEAR-ROUND



LAND CONSERVATION  
FOUNDATION

On this 108-acre tract, 59 acres of former farmland are being restored to native floodplain forest. The Bruce Hannon Levee Trail gives close-up views of the floodplain and access to the Sangamon River, noted on the Illinois Natural Areas Inventory for its rich variety of aquatic resources, especially freshwater mussels. The trail also offers opportunities for fishing, birding, nature study, and biological research. See usage guidelines at [landconservationfoundation.org/safety](http://landconservationfoundation.org/safety).



**PLEASE USE CAUTION!** There are potential hazards on this trail, especially after storm effects, when flooding occurs. There is no guarantee of your safety. You are welcome to access Land Conservation Foundation lands at your own risk. If water is rising, turn around, don't drown! The trail could be flooded by the time you leave, trapping you on the trail. If water is flowing over the trail, turn around, don't drown! Just one foot of rushing floodwater can move a car.

**Emergency: Call 911**  
[landconservationfoundation.org](http://landconservationfoundation.org)